

# AGENDA

---

**Meeting:** Electoral Review Committee

**Place:** The Kennet Room - County Hall, Bythesea Road, Trowbridge, BA14 8JN

**Date:** Monday 8 July 2019

**Time:** 1.00 pm

---

Please direct any enquiries on this Agenda to Kieran Elliott, of Democratic Services, County Hall, Bythesea Road, Trowbridge, direct line 01225 718504 or email [kieran.elliott@wiltshire.gov.uk](mailto:kieran.elliott@wiltshire.gov.uk)

Press enquiries to Communications on direct lines (01225) 713114/713115.

This Agenda and all the documents referred to within it are available on the Council's website at [www.wiltshire.gov.uk](http://www.wiltshire.gov.uk)

---

## Membership:

Cllr Ian Blair-Pilling  
Cllr Clare Cape  
Cllr Richard Clewer (Chairman)  
Cllr Gavin Grant  
Cllr Ian McLennan

Cllr Christopher Newbury  
Cllr Ashley O'Neill  
Cllr Jonathon Seed (Vice-Chairman)  
Cllr Stuart Wheeler  
Cllr Graham Wright

---

## Substitutes:

Cllr Peter Fuller  
Cllr Ruth Hopkinson  
Cllr Nick Murry

Cllr Jacqui Lay  
Cllr Ricky Rogers  
Cllr Ian Thorn

---

## **Recording and Broadcasting Information**

Wiltshire Council may record this meeting for live and/or subsequent broadcast on the Council's website at <http://www.wiltshire.public-i.tv>. At the start of the meeting, the Chairman will confirm if all or part of the meeting is being recorded. The images and sound recordings may also be used for training purposes within the Council.

By entering the meeting room you are consenting to being recorded and to the use of those images and recordings for broadcasting and/or training purposes.

The meeting may also be recorded by the press or members of the public.

Any person or organisation choosing to film, record or broadcast any meeting of the Council, its Cabinet or committees is responsible for any claims or other liability resulting from them so doing and by choosing to film, record or broadcast proceedings they accept that they are required to indemnify the Council, its members and officers in relation to any such claims or liabilities.

Details of the Council's Guidance on the Recording and Webcasting of Meetings is available on request. Our privacy policy can be found [here](#).

## **Parking**

To find car parks by area follow [this link](#). The three Wiltshire Council Hubs where most meetings will be held are as follows:

**County Hall, Trowbridge**  
**Bourne Hill, Salisbury**  
**Monkton Park, Chippenham**

County Hall and Monkton Park have some limited visitor parking. Please note for meetings at County Hall you will need to log your car's registration details upon your arrival in reception using the tablet provided. If you may be attending a meeting for more than 2 hours, please provide your registration details to the Democratic Services Officer, who will arrange for your stay to be extended.

## **Public Participation**

Please see the agenda list on following pages for details of deadlines for submission of questions and statements for this meeting.

For extended details on meeting procedure, submission and scope of questions and other matters, please consult [Part 4 of the council's constitution](#).

The full constitution can be found at [this link](#).

For assistance on these and other matters please contact the officer named above for details

# AGENDA

1        **Election of Chairman 2019/20**

To elect a Chairman of the Committee for 2019/20.

2        **Election of Vice-Chairman 2019/20**

To elect a Vice-Chairman of the Committee for 2019/20.

3        **Apologies**

To receive any apologies or substitutions for the meeting.

4        **Minutes of the Previous Meeting** (*Pages 5 - 6*)

To confirm the minutes of the meeting held on 11 March 2019.

5        **Declarations of Interest**

To receive any declarations of disclosable interests or dispensations granted by the Standards Committee.

6        **Chairman's Announcements**

To receive any announcements through the Chair.

7        **Public Participation**

Statements

If you would like to make a statement at this meeting on any item on this agenda, please register to do so at least 10 minutes prior to the meeting. Up to 3 speakers are permitted to speak for up to 3 minutes each on any agenda item.

Please contact the officer named on the front of the agenda for any further clarification.

Questions

To receive any questions from members of the public or members of the Council received in accordance with the constitution.

Those wishing to ask questions are required to give notice of any such questions in writing to the officer named on the front of this agenda no later than 5pm on 4 March 2019 in order to be guaranteed of a written response. In order to receive a verbal response questions must be submitted no later than 5pm on 6 March 2019. Please contact the officer named on the front of this agenda for

further advice. Questions may be asked without notice if the Chairman decides that the matter is urgent.

Details of any questions received will be circulated to Committee members prior to the meeting and made available at the meeting and on the Council's website.

**8 Polling District and Polling Place Review**

To consider information relating to the Polling District and Polling Place Review.

*Papers will be circulated in an agenda supplement to follow.*

**9 Community Governance Reviews (Pages 7 - 66)**

To consider arrangements for future Community Governance Reviews

**10 Date of Next Meeting**

An additional meeting has been scheduled for 17 July 2019, with another meeting on 26 September 2019.

**11 Urgent Items**

Any other items of business, which the Chairman agrees to consider as a matter of urgency.

## **ELECTORAL REVIEW COMMITTEE**

---

**MINUTES OF THE ELECTORAL REVIEW COMMITTEE MEETING HELD ON 11 MARCH 2019 AT SALISBURY ROOM - COUNTY HALL, BYTHESEA ROAD, TROWBRIDGE, BA14 8JN.**

**Present:**

Cllr Richard Clewer (Chairman), Cllr Gavin Grant, Cllr Ian McLennan, Cllr Christopher Newbury, Cllr Ashley O'Neill, Cllr Jonathon Seed (Vice-Chairman), Cllr Stuart Wheeler and Cllr Graham Wright

**Also Present:**

Cllr Pat Aves

---

**8 Apologies**

Apologies were received from Councillor Ian Blair-Pilling.

**9 Minutes of the Previous Meeting**

Minutes of the meeting held on 28 February 2019 were presented for consideration, and it was,

**Resolved:**

**To approve and sign the minutes as a true and correct record.**

**10 Declarations of Interest**

There were no declarations.

**11 Chairman's Announcements**

There were no announcements.

**12 Public Participation**

A statement was received from Mr Francis Morland that as he had set out in communication to the Committee and the Local Government Boundary Commission for England he had serious concerns that the electorate projections used to the review were seriously flawed.

**13 Electoral Review Update**

The Chairman updated the Committee on work that had been undertaken since the last meeting including identifying all minor mapping issues that would need to be raised with the Local Government Boundary Commission for England, for

instance where they had accepted the Council's proposals but shown a slightly different line on the map, or not aligned with parish boundaries.

The Committee then considered the draft submission to be debated at Full Council on 25 March 2019, and confirmed the approach that should be recommended for each division. It was agreed that in the absence of local objection to accept the proposals for Devizes, although there were some concerns about the size of the divisions given lack of development in the northern area. For the Southwick division it was agreed to propose a line that ran around the back of houses rather than the Woodmarsh and Westbury road, to avoid the Trowbridge division extending into the village proper of North Bradley. Other areas discussed included retaining the original proposals of the Council for Westbury and accepting the proposals of the Commission in Corsham town.

The Committee also received a list of recommended names for each division and discussed them further, noting a consistent and broad set of principles had been used to develop them. It was then agreed to circulate an updated list to all committee members with the final decision on what to propose to council delegated to the Director of Legal and Democratic Services.

At the conclusion of discussion, it was,

**Resolved:**

**To recommend that Council approves the draft response to the Local Government Boundary Commission for England as set out in the agenda papers, subject to any necessary consequential changes and any supporting evidence, with the final wording of the response to be delegated to the Director of Legal and Democratic Services after consultation with the Chairman of the Electoral Review Committee.**

**That the proposed names of divisions to be recommended to Council be delegated to the Director of Legal and Democratic Services after consultation with the Chairman of the Electoral Review Committee and circulation of the updated list to the Committee.**

14 **Urgent Items**

There were no urgent items.

(Duration of meeting: 1.00 - 1.50 pm)

The Officer who has produced these minutes is Kieran Elliott of Democratic Services, direct line 01225 718504, e-mail [kieran.elliott@wiltshire.gov.uk](mailto:kieran.elliott@wiltshire.gov.uk)

Press enquiries to Communications, direct line (01225) 713114/713115

## Wiltshire Council

### Electoral Review Committee

8 July 2019

---

### Community Governance Reviews

#### Purpose

1. For the Committee to consider future arrangements for Community Governance Reviews.

#### Background

2. A Community Governance Review is a process wherein a principal authority can adjust the governance arrangements of parishes within its council area. This can include amending the name of the parish, number of councillors or wards, the external boundaries, or even the creation/merger/abolition/grouping of entire parishes.
3. The Council is required to undertake reviews where it receives a valid petition, signed by the requisite number of electors. The Council may also undertake reviews at any time where it considers it appropriate to do so, for example where there have been changes in populations as a result of new developments.
4. As a result of the Electoral Review of Wiltshire Council, which will have additional effects upon many town and parish governance arrangements, the intention had been that the Electoral Review Committee would oversee Community Governance Reviews in appropriate areas, following the contacting of parish councils, and following confirmation of the new electoral divisions. This would have enabled completion of any reviews in advance of the May 2021 local elections.
5. Although the delays of the Electoral Review mean that the start date for any review might as a result be delayed, and not guarantee all reviews could be completed in time for the local elections, the Council as a whole must still review the governance arrangements of the parishes as appropriate.

#### Main Considerations

6. The Committee had a workshop on 6 June 2019 to be briefed on the background of Community Governance Reviews and potential timescales and methodologies for any review undertaken within Wiltshire.
7. Guidance on Community Governance Reviews is attached at **Appendix A**.
8. In particular, the Council must set out terms of reference for any areas it intends to review, and how it intends to deal with any review, including appropriate public consultation on any proposals.
9. The Council is not obliged to determine all requests for a review within a certain timeframe, unless it is in the form a petition with sufficient signatures. Therefore, the Council is able to prioritise the areas to review and when it is practical to review them.

A number of requests already received had been delayed due to the ongoing Electoral Review.

10. With the Final Recommendations from the Commission in relation to the Electoral Review not expected to be published until October 2019, these would be unlikely to receive parliamentary approval until approximately February 2020.
11. Any Community Governance Reviews would need to be completed by approximately December 2020 in order for any changes to be made in time for the May 2021 local elections. Therefore, a view would need to be taken as to how many review requests can be undertaken in advance of the elections, and how many would need to take place sometime after.
12. Full Council has been requested to delegate the responsibility of determining which areas to review, in which order, and in what manner, to the Committee. This would not remove the role of Full Council as the decision maker in the process.
13. An example of the type of process that can be followed is included at **Appendix B**. Periods of public consultation, information gathering, including with area board members, are built into the process, which can be finalised at the period terms of reference for the reviews are approved.
14. Subject to the delegation from Full Council, it is proposed that in the first instance that the Committee authorise officers to contact parish councils to identify whether there are any governance issues that they believe need to be addressed at this time. These can then be considered to determine whether they should be taken forward and, if so, which of them should be progressed in time for the 2021 elections, taking into account the resourcing requirements involved.
15. Any request from a parish would require details of any change along with a council resolution. It is proposed the initial contact take place from July-October 2019 to allow time for responses to be considered. Following the publication of Final Recommendations to the Electoral Review of Wiltshire Council, parishes would be re-contacted to see if this has any impact upon their requests or lack thereof.
16. Further preparatory work could then proceed in late 2019, including engagement with parishes and area board members, ahead of formal beginning of some number of reviews in late 2019 or early 2020.
17. One aspect that would need to be confirmed is the length and nature of any consultation with the public. There is no statutory requirement to consult in a particular way, but the Council needs to consult appropriately. This could, for instance, mean that for certain types of requested change the council consults in one way, but for other more minor changes it consults in another. These details would be confirmed in any terms of reference for a review, and would thereafter need to be adhered to and not amended.

### **Safeguarding Implications**

18. There are no safeguarding implications.



### **Public Health Implications**

19. There are no public health implications.

### **Procurement Implications**

20. There are no procurement implications.

### **Equalities Implications**

21. There are no equalities implications.

### **Environmental Implications**

22. There are no environmental implications.

### **Financial Implications**

23. Community Governance Reviews will require periods of appropriate public consultation which will incur additional resources, in particular in relation to the cost of physically mailing those affected in certain areas.

### **Legal Implications**

24. The LGPIH Act 2007 gives the Council the power to undertake CGRs and sets out the criteria for such reviews. There is also statutory guidance on the conduct of such reviews that the Council would have to comply with.

### **Risks**

25. Whilst there is no obligation on the Council to carry out CGRs (other than in response to a petition), failure to do so may lead to the governance arrangements in some areas being outdated and inappropriate to provide effective local governance for the area.

### **Options Considered**

26. In place of additional delegation to the Committee, additional involvement of Full Council would be required in order to approve the terms of reference of any review process.

### **Proposal**

27. That subject to additional delegation from Full Council, that on behalf of the Committee the Director of Legal, Electoral and Registration Services is authorised to contact all parishes to identify the number and extent of any requests for Community Governance Reviews that are required.

### **Ian Gibbons - Director of Legal, Electoral and Registration Services**

---

Report Author: Kieran Elliott, Senior Democratic Services Officer, 01225 718504,  
[kieran.elliott@wiltshire.gov.uk](mailto:kieran.elliott@wiltshire.gov.uk)

### **Appendices**

Appendix A – Guidance

Appendix B – Example flow chart

### **Background Papers**

None

This page is intentionally left blank



## Guidance on community governance reviews



The  
Local Government  
Boundary Commission  
for England

## Guidance on community governance reviews

March 2010

Department for Communities and Local Government  
Local Government Boundary Commission for England

Department for Communities and Local Government  
Eland House  
Bressenden Place  
London  
SW1E 5DU  
Telephone: 0303 444 0000  
Website: [www.communities.gov.uk](http://www.communities.gov.uk)

© Crown Copyright, 2010

*Copyright in the typographical arrangement rests with the Crown.*

*This publication, excluding logos, may be reproduced free of charge in any format or medium for research, private study or for internal circulation within an organisation. This is subject to it being reproduced accurately and not used in a misleading context. The material must be acknowledged as Crown copyright and the title of the publication specified.*

Any other use of the contents of this publication would require a copyright licence. Please apply for a Click-Use Licence for core material at [www.opsi.gov.uk/click-use/system/online/pLogin.asp](http://www.opsi.gov.uk/click-use/system/online/pLogin.asp), or by writing to the Office of Public Sector Information, Information Policy Team, Kew, Richmond, Surrey TW9 4DU

e-mail: [licensing@opsi.gov.uk](mailto:licensing@opsi.gov.uk)

If you require this publication in an alternative format please email [alternativeformats@communities.gsi.gov.uk](mailto:alternativeformats@communities.gsi.gov.uk)

Communities and Local Government Publications

Online via the Communities and Local Government website: [www.communities.gov.uk](http://www.communities.gov.uk)

March 2010

ISBN: 978 1 4098 2421 3



# Contents

<b>Foreword</b>	<b>5</b>
<b>Section 1</b>	
Introduction	6
The Local Government and Public Involvement in Health Act 2007 and community governance reviews	6
Aim of this guidance	6
Issues covered in this guidance	7
Statutory provisions	7
Structure of Guidance	8
Further information	8
<b>Section 2</b>	
Undertaking community governance reviews	9
Why undertake a community governance review?	9
Terms of reference for community governance reviews	10
Timing of community governance reviews	11
Undertaking community governance reviews	13
Public petitions to trigger community governance reviews	15
<b>Section 3</b>	
Making and implementing recommendations made in community governance reviews	17
Context of parishes in the wider community	17
Defining a parish	17
Criteria for undertaking a community governance review:	18
The identities and interests of local communities	19
Effective and convenient local government	20
Factors for consideration	21
The impact on community cohesion of community governance arrangements	21
Size, population and boundaries of a local community or parish	23

Parish meetings and parish councils	25
Recommendations and decisions on the outcome of community governance reviews	26
Implementation of community governance reviews by order	28
Maps of parish changes and mapping conventions	29
<b>Section 4</b>	
Other aspects of community governance reviews	30
Parish names and alternative styles for parishes	30
Grouping or degrouping parishes	31
Abolishing parishes and dissolving parish councils	32
Rural areas	33
London	34
Other urban areas	34
Charter trustee areas	35
Other (non-parish) forms of community governance	35
<b>Section 5</b>	
Electoral arrangements	39
Introduction	39
What are electoral arrangements?	39
Ordinary year of election	39
Council size	40
Parish warding	41
The number and boundaries of parish wards	42
The number of councillors to be elected for parish wards	42
Names of parish wards	43
Electorate forecasts	44
Consent/protected electoral arrangements	44
<b>Section 6</b>	
Consequential recommendations for related alterations to the boundaries of principal councils' wards and/or divisions	46



## Foreword

This document comprises guidance issued by the Secretary of State and the Local Government Boundary Commission for England under section 100 of the Local Government and Public Involvement and Health Act 2007 (the 2007 Act) on undertaking, and giving effect to recommendations made in, community governance reviews and on making recommendations about electoral arrangements respectively.

The Implementation Plan for the Local Government White Paper, *Strong and Prosperous Communities*<sup>1</sup> (the 2006 White Paper), sets out Communities and Local Government's future approach to guidance. It proposes that guidance must be short, clear and practical, and that an open and inclusive approach to its preparation should be followed, involving the range of stakeholders who will be affected by or have an interest in it.

This guidance follows that approach. It is an updated version of guidance originally published in 2008 prepared by a partnership of Communities and Local Government and the Electoral Commission with stakeholders including DEFRA, the Local Government Association, County Councils Network, London Councils, the National Association of Local Councils, and the Society of Local Council Clerks. It aims to be clear and practical but also to encourage innovative and flexible local action. The main change to the guidance has been to reflect the establishment of the Local Government Boundary Commission for England, which is responsible for the boundary-related functions previously exercised by the Electoral Commission and the Boundary Committee for England.

A model community governance reorganisation order is available on the Department's website.<sup>2</sup>

---

<sup>1</sup> *Strong and Prosperous Communities*, the Local Government White Paper, The Stationery Office, October 2006(Cm 6969).

<sup>2</sup> <http://www.communities.gov.uk/publications/localgovernment/modelreorganisationorder>

## Section 1: Introduction

### The Local Government and Public Involvement in Health Act 2007 and community governance reviews

1. Chapter 3 of Part 4 of the 2007 Act devolves the power to take decisions about matters such as the creation of parishes and their electoral arrangements to local government and local communities in England.
2. The Secretary of State therefore has no involvement in the taking of decisions about recommendations made in community governance reviews and the Local Government Boundary Commission for England's (LGBCE) involvement is limited to giving effect to consequential recommendations for related alterations to the electoral areas of principal councils.
3. From 13 February 2008, district councils, unitary county councils and London borough councils ('principal councils') have had responsibility for undertaking community governance reviews and have been able to decide whether to give effect to recommendations made in those reviews. In making that decision, they will need to take account of the views of local people.
4. Principal councils are required, by section 100(4) of the 2007 Act, to have regard to this guidance which is issued by the Secretary of State, under section 100(1) and (3), and the LGBCE under section 100(2).
5. This guidance is not an authoritative interpretation of the law (as that is ultimately a matter for the courts) and it remains the responsibility of principal councils to ensure that any actions taken by them comply with the relevant legislation. They should seek their own legal advice where appropriate.

#### Aim of this guidance

6. This guidance is intended to provide assistance to principal councils on:
  - a) undertaking community governance reviews;
  - b) the making of recommendations for electoral arrangements for parish councils and the making of consequential recommendations to the LGBCE for related alterations to the boundaries of electoral areas of principal councils; and

- c) giving effect to recommendations made in community governance reviews.

### Issues covered in this guidance

7. The guidance supports and helps to implement key aspects of the 2006 White Paper. The 2007 Act requires that local people are consulted during a community governance review, that representations received in connection with the review are taken into account and that steps are taken to notify them of the outcomes of such reviews including any decisions.
8. The matters covered by the guidance include:
  - a) duties and procedures in undertaking community governance reviews (Chapter 2), including on community governance petitions; the document gives guidance on a valid petition, and for the requirement for petitions to meet specific numerical or percentage thresholds signed by local electors;
  - b) making and implementing decisions on community governance (Chapter 3): the 2007 Act places a duty on principal authorities to have regard to the need to secure that any community governance for the area under review reflects the identities and interests of the local community in that area, and that it is effective and convenient; relevant considerations which influence judgements against these two principal criteria include the impact on community cohesion, and the size, population and boundaries of the proposed area;
  - c) other forms of community governance not involving parishes (Chapter 4) for example, residents' associations, community forums, tenant management organisations, area committees;
  - d) considerations on whether parish meetings and parish councils would be most appropriate, and electoral arrangements (Chapter 5);
  - e) consequential recommendations for related alterations to ward and division boundaries (Chapter 6).

### Statutory provisions

9. In addition to the 2007 Act, legislation relating to parishes can also be found in the Local Government Act 1972 (in particular, provision about parish meetings and councils, the constitution of a parish meeting, the constitution and powers of parish councils and about parish councillors) and the Local Democracy, Economic Development and Construction Act 2009 (reviews of, and recommendations about,

electoral areas by the LGBCE), as well as in other enactments.

## Structure of guidance

10. This document is published jointly and is divided into two parts. Chapters 2 to 4 deal with those matters which the Secretary of State may issue guidance on and the issues raised in Chapters 5 and 6 are those on which the LGBCE may issue guidance. Having conducted a community governance review, unless in certain circumstances there are no implications for electoral arrangements, principal councils will need to consider both parts of this guidance together.

## Further information

11. Further information about electoral arrangements for parishes and any related alterations to district or London borough wards, or county divisions should be sought from the LGBCE's website [www.lgbce.org.uk](http://www.lgbce.org.uk).

## Section 2: Undertaking community governance reviews

### Why undertake a community governance review?

12. Community governance reviews provide the opportunity for principal councils to review and make changes to community governance within their areas. It can be helpful to undertake community governance reviews in circumstances such as where there have been changes in population, or in reaction to specific or local new issues. The Government has made clear in the 2006 White Paper and in the 2007 Act its commitment to parish councils. It recognises the role such councils can play in terms of community empowerment at the local level. The 2007 Act provisions are intended to improve the development and coordination of support for citizens and community groups so that they can make the best use of empowerment opportunities.
13. The 2007 Act is intended to streamline the process of taking decisions about giving effect to recommendations made in a community governance review, such as recommendations for the creation of new parishes and the establishment of parish councils, and about other matters such as making changes to parish boundaries and electoral arrangements. By devolving the powers to take these decisions from central government to local government, the 2007 Act is intended to simplify the decision-making process and make it more local.
14. Parish and town councils are the most local tier of government in England. There are currently about 10,000 parishes in England – around 8,900 of which have councils served by approximately 70,000 councillors. There is a large variation in size of parishes in England from those with a handful of electors to those with over 40,000 electors.
15. In many cases making changes to the boundaries of existing parishes, rather than creating an entirely new parish, will be sufficient to ensure that community governance arrangements to continue to reflect local identities and facilitate effective and convenient local government. For example, over time communities may expand with new housing developments. This can often lead to existing parish boundaries becoming anomalous as new houses are built across the boundaries resulting in people being in different parishes from their neighbours. In such circumstances, the council should consider undertaking a community governance review, the terms of reference

of which should include consideration of the boundaries of existing parishes.

16. A community governance review offers an opportunity to put in place strong, clearly defined boundaries, tied to firm ground features, and remove the many anomalous parish boundaries that exist in England. Reviews also offer the chance to principal councils to consider the future of what may have become redundant or moribund parishes, often the result of an insufficient number of local electors within the area who are willing to serve on a parish council. Some of these issues are considered elsewhere in this guidance (see chapter 3 about parish councils and parish meetings and chapter 4 regarding grouping parishes and dissolving parish councils and abolishing parishes).
17. Since new boundaries may be used to provide the building blocks for district and London borough ward and/or county division boundaries in future electoral reviews of district, London borough, unitary and county councils, it is important that principal councils seek to address parish boundary anomalies when they arise. Principal councils should therefore consider carefully changes to parish boundaries as these can have consequential effects on the boundaries for other tiers of local government.
18. Community governance reviews may also be triggered by local people presenting public petitions to the principal council. This is explained in more detail in paragraphs 39 to 43 on public petitions to trigger community governance reviews.

### Terms of reference for community governance reviews

19. The 2007 Act allows principal councils to determine the terms of reference under which a community governance review is to be undertaken. It requires the terms of reference to specify the area under review and the principal council to publish the terms of reference. If any modifications are made to the terms of reference, these must also be published.
20. Terms of reference will need to be drawn up or modified where a valid community governance petition has been received by the principal council. Local people will be able to influence the terms of reference when petitioning (see paragraphs 24 and 39 to 43 for more information).
21. As the 2007 Act devolves power from central to local government and to local communities, it is inappropriate to prescribe a “one size fits

all” approach to terms of reference for community governance reviews applied by principal councils. However, the Government expects terms of reference to set out clearly the matters on which a community governance review is to focus. The local knowledge and experience of communities in their area which principal councils possess will help to frame suitable terms of reference. The terms should be appropriate to local people and their circumstances and reflect the specific needs of their communities.

22. In areas for which there is both a district council and a county council, district councils are required under section 79 of the 2007 Act to notify the county council of their intention to undertake a review and of their terms of reference. County councils play a strategic role in the provision of local services, and they can offer an additional dimension to any proposal to conduct a review, particularly as the terms of reference are being formulated. The bodies which the principal council must consult under section 93 of the 2007 Act include other local authorities which have an interest in the review. Such local authorities would include any county council for the area concerned. In such circumstances the district council should seek the views of the county council at an early stage.
23. Local people may have already expressed views about what form of community governance they would like for their area, and principal councils should tailor their terms of reference to reflect those views on a range of local issues. Ultimately, the recommendations made in a community governance review ought to bring about improved community engagement, better local democracy and result in more effective and convenient delivery of local services.

### Timing of community governance reviews

24. A principal council is under a duty to carry out a community governance review if it receives a valid community governance petition for the whole or part of the council’s area. However, the duty to conduct a review does not apply if:
  - a) the principal council has concluded a community governance review within the last two years which in its opinion covered the whole or a significant part of the area of the petition; or
  - b) the council is currently conducting a review of the whole, or a significant part of the area to which the petition relates.
25. Where a review has been conducted within the last two years the principal council still has the power to undertake another review if it so wishes. Where a review is ongoing, the council can choose to

modify the terms of reference of the ongoing review to include the matters within the petition, or to conduct a second review.

26. Otherwise, the 2007 Act provides for a principal council to conduct a community governance review at any time. Principal councils will want to keep their community governance arrangements under review, and they should ensure that they consider on a regular basis whether a review is needed. A review may need to be carried out, for example, following a major change in the population of a community or as noted earlier in this chapter (see paragraph 15) to re-draw boundaries which have become anomalous, for example following new housing developments being built across existing boundaries. Principal councils should exercise their discretion, but it would be good practice for a principal council to consider conducting a review every 10-15 years – except in the case of areas with very low populations when less frequent reviews may be adequate.
27. In the interests of effective governance, the principal council should consider the benefits of undertaking a review of the whole of its area in one go, rather than carrying out small scale reviews in a piecemeal fashion of two or three areas. However, it is recognised that a full-scale review will not always be warranted, particularly where a review of the whole area or a significant part of the principal council's area has been carried out within the last few years. Occasionally, it may be appropriate to carry out a smaller review, for example, to adjust minor parish boundary anomalies.
28. Principal councils should use their knowledge and awareness of local issues when deciding whether to undertake a review. However, principal councils should avoid starting a community governance review if a review of district, London borough or county council electoral arrangements is being, or is about to be, undertaken. Ideally, community governance reviews should be undertaken well in advance of such electoral reviews, so that the LGBCE in its review of local authority electoral arrangements can take into account any parish boundary changes that are made. The LGBCE can provide advice on its programme of electoral reviews.
29. Where the LGBCE bases its new district or London borough ward boundaries on parish boundaries the Parliamentary Boundary Commission will then use these boundaries to determine parliamentary constituency boundaries (parliamentary constituencies use district and London borough wards as their building blocks). This illustrates the importance of keeping parish boundaries under review and ensuring they accurately reflect local communities.
30. Reorganisation of community governance orders (explained further in



this chapter under implementation) creating new parishes, abolishing parishes or altering their area can be made at any time following a review. However for administrative and financial purposes (such as setting up the parish council and arranging its first precept), the order should take effect on the 1 April following the date on which it is made. Electoral arrangements for a new or existing parish council will come into force at the first elections to the parish council following the reorganisation order. However, orders should be made sufficiently far in advance to allow preparations for the conduct of those elections to be made. In relation to a new parish council, the principal council may wish to consider whether, during the period between 1 April and the first elections to the parish council, it should make interim arrangements for the parish to be represented by councillors who sit on the principal council.

31. Parish council elections should normally take place every four years at the same time as the elections for the district or London borough ward or, in areas outside of London which have no district council, the county division in which a parish, or part of a parish, is situated. However, where a new parish is to be created, it may be necessary to alter the date of the next parish election, particularly if the next elections to the ward or division are not scheduled to take place for some time. To achieve this, section 98 of the 2007 Act allows principal councils to modify or exclude the application of sections 16(3) and 90 of the Local Government Act 1972, so that the first election to the new parish council is held in an earlier year. This results in councillors serving either a shortened or lengthened first term to allow the parish council's electoral cycle to return to that of the unitary, district or London borough ward at the next election.

### Undertaking community governance reviews

32. Section 93 of the 2007 Act allows principal councils to decide how to undertake a community governance review, provided that they comply with the duties in that Act which apply to councils undertaking reviews.
33. Principal councils will need to consult local people and take account of any representations received in connection with the review. When undertaking the review they must have regard to the need to secure that community governance reflects the identities and interests of the community in the area under review, and the need to secure that community governance in that area is effective and convenient. Further information on making recommendations is in Chapter 3.
34. Under the 2007 Act principal councils are required to consult both

those local government electors in the area under review, and others (including a local authority such as a county council) which appears to the principal council to have an interest in the review. In the case of a community governance review where a parish council already exists, as a local authority, it too should be consulted. Other bodies might include local businesses, local public and voluntary organisations - such as schools or health bodies. The principal council must take into account any representations it receives as part of a community governance review.

35. Principal councils must consider the wider picture of community governance in carrying out their reviews. In some areas there may be well established forms of community governance such as local residents' associations, or community forums which local people have set up and which help make a distinct contribution to the community. Some principal councils may also have set up area committees which perform a specific role in the local community.
36. In undertaking a review, section 93(5) requires principal councils to take these bodies into account. Potentially, as representatives of their community, these bodies may be considered as foundations for or stages towards the creation of democratically elected parishes (further information about other non-parish forms of community governance can be found in Chapter 4).
37. Principal councils are required to complete the review, including consequential recommendations to the LGBCE for related alterations to the boundaries of principal area wards and/or divisions, within 12 months of the start of the community governance review. The review begins when the council publishes terms of reference of the review and concludes when the council publishes the recommendations made in the review<sup>3</sup>. The Government stated in the 2006 White Paper that they wanted the process for undertaking community governance (formerly parish reviews) to be simplified and speeded up. Given that there is no longer the need to make recommendations to Central Government prior to implementing any review recommendations, the 2007 Act makes it easier for principal councils to reach decisions on community governance reviews. Whilst a community governance review will depend on a number of factors, such as the number of boundary changes, the Government believes it should be feasible to accomplish reviews within 12 months from the start.

---

<sup>3</sup> See section 102(3) of the 2007 Act for the interpretation of 'begin' and 'conclude' in relation to a review.

38. Principal councils will need to build into their planning process for reviews reasonable periods for consultation with local electors and other stakeholders, for the consideration of evidence presented to them in representations, as well as for decision-making (see Chapter 3 on making and implementing recommendations made in community governance reviews). Implementation of reviews by Order and the requirement for the principal council to publicise the outcome of a community governance review are covered in paragraphs 98 to 103.

### Public petitions to trigger community governance reviews

39. In recent years, the Government has been keen to encourage more community engagement. The 2006 White Paper confirmed this development further stressing the intention to build on the existing parish structure improving capacity to deliver better services, and to represent the community's interests.
40. Under the 2007 Act, local electors throughout England can petition their principal council for a community governance review to be undertaken. The petition must set out at least one recommendation that the petitioners want the review to consider making. These recommendations can be about a variety of matters including:
- the creation of a parish
  - the name of a parish
  - the establishment of a separate parish council for an existing parish
  - the alteration of boundaries of existing parishes
  - the abolition of a parish
  - the dissolution of a parish council
  - changes to the electoral arrangements of a parish council
  - whether a parish should be grouped under a common parish council or de-grouped.
  - a strong, inclusive community and voluntary sector;
  - a sense of civic values, responsibility and pride; and
  - a sense of place – a place with a 'positive' feeling for people and local distinctiveness.
  - reflective of the identities and interests of the community in that area; and
  - effective and convenient.

- the impact of community governance arrangements on community cohesion; and
  - the size, population and boundaries of a local community or parish.
  - People from different backgrounds having similar life opportunities
  - People knowing their rights and responsibilities
41. For a petition to be valid it must meet certain conditions. The first of these conditions is that a petition must be signed by the requisite number of local electors. It is recommended that petitioners aim to collect the requisite number of signatures based on the most recently published electoral register. It should be against this register that the petition thresholds (set out below) will be assessed. The three thresholds are:
- a) for an area with less than 500 local electors, the petition must be signed by at least 50% of them;
  - b) for an area with between 500 and 2,500 local electors, the petition must be signed by at least 250 of them;
  - c) for an area with more than 2,500 local electors, the petition must be signed by at least 10% of them.
42. These thresholds have been chosen to ensure that the minimum number of signatures to be obtained is neither so high that it will be impossible in most cases to collect that number nor so low as to allow a very small minority of electors to trigger a review. So, in areas with higher populations the threshold is not so high as to prevent a genuine desire for a review not being realised. Equally, in areas with smaller numbers of electors, this means that a handful of electors cannot initiate a review against the wishes of the majority of their fellow electors. The thresholds therefore help to ensure that the local democratic process is properly maintained.
43. The petition should define the area to which the review relates, whether on a map or otherwise, and refer to identifiable fixed boundaries. Where a proposed boundary is near an individual property, the petition must make clear on which side of the boundary the property lies. The petition must specify one or more proposed recommendations for review.
44. Where a petition recommends the establishment of a town or parish council or parish meeting (see paragraph 88) in an area which does not currently exist as a parish, the petition is to be treated as including

a recommendation for a parish to be created even if it does not expressly make such a recommendation<sup>4</sup>

---

<sup>4</sup> See Section 80 (8) of the 2007 Act

## Section 3: Making and implementing recommendations made in community governance reviews

45. As stated in the 2006 White Paper parish councils are an established and valued form of neighbourhood democracy and management. They are not only important in rural areas but increasingly have a role to play in urban areas. We propose to build on the existing parish structure, so as to improve its capacity to deliver better services and represent the community's interests.

### Context of parishes in the wider community

46. Communities and Local Government is working to help people and local agencies create cohesive, attractive and economically vibrant local communities, building on the Government's Sustainable Communities' strategy.
47. An important aspect to approaching sustainable communities is allowing local people a say in the way their neighbourhoods are managed. One of the characteristics of a sustainable community is the desire for a community to be well run with effective and inclusive participation, representation and leadership. This means:
  - a) representative, accountable governance systems which both facilitate strategic, visionary leadership and enable inclusive, active and effective participation by individuals and organisations; and
  - b) effective engagement with the community at neighbourhood level including capacity building to develop the community's skills, knowledge and confidence;
48. Central to the concept of sustainable communities is community cohesion. The impact of community governance on cohesion is an issue to be taken into account when taking decisions about community governance arrangements, and this is discussed further below.

### Defining a parish

49. Parish and town councils vary enormously in size, activities and circumstances, representing populations ranging from less than 100 (small rural hamlets) to up to 70,000 (large shire towns – Weston-Super-Mare Town Council being the largest). The majority of them are small; around 80% represent populations of less than 2,500. Small parishes with no parish council can be grouped with

neighbouring parishes under a common parish council (see paragraphs 112 to 115).

50. Parish councils continue to have two main roles: community representation and local administration. For both purposes it is desirable that a parish should reflect a distinctive and recognisable community of place, with its own sense of identity. The views of local communities and inhabitants are of central importance.
51. The identification of a community is not a precise or rigid matter. The pattern of daily life in each of the existing communities, the local centres for education and child care, shopping, community activities, worship, leisure pursuits, transport facilities and means of communication generally will have an influence. However, the focus of people's day-to-day activities may not be reflected in their feeling of community identity. For instance, historic loyalty may be to a town but the local community of interest and social focus may lie within a part of the town with its own separate identity.

### Criteria for undertaking a community governance review

52. Section 93 of the 2007 Act requires principal councils to ensure that community governance within the area under review will be:
53. When considering the criteria identified in the 2007 Act, principal councils should take into account a number of influential factors, including:
54. In considering this guidance, the impact on community cohesion is linked specifically to the identities and interests of local communities. Size, population and boundaries are linked to both but perhaps more specifically to community governance being effective and convenient.

### The identities and interests of local communities

55. Parish councils have an important role to play in the development of their local communities. Local communities range in size, as well as in a variety of other ways. Communities and Local Government is working to help people and local agencies create cohesive, attractive and economically vibrant local communities. The aim for communities across the country is for them to be capable of fulfilling their own potential and overcoming their own difficulties, including community conflict, extremism, deprivation and disadvantage. Communities need to be empowered to respond to challenging economic, social, and cultural trends, and to demographic change.
56. Parish councils can contribute to the creation of successful

communities by influencing the quality of planning and design of public spaces and the built environment, as well as improving the management and maintenance of such amenities. Neighbourhood renewal is an important factor to improve the quality of life for those living in the most disadvantaged areas. Parish councils can be well placed to judge what is needed to build cohesion. Other factors such as social exclusion and deprivation may be specific issues in certain areas, and respect is fundamental to the functioning of all places and communities. The Government remains committed to civil renewal, and empowering citizens to work with public bodies, including parish councils, to influence public decisions.

57. 'Place' matters in considering community governance and is a factor in deciding whether or not to set up a parish. Communities and Local Government's vision is of prosperous and cohesive communities which offer a safe, healthy and sustainable environment. One aspect of that is strong and accountable local government and leadership. Parish councils can perform a central role in community leadership. Depending on the issue, sometimes they will want to take the lead locally, while at other times they may act as an important stakeholder or in partnership with others. In either case, parish councils will want to work effectively with partners to undertake the role of 'place-shaping', and be responsive to the challenges and opportunities of their area in a co-ordinated way.
58. It is clear that how people perceive where they live - their neighbourhoods - is significant in considering the identities and interests of local communities and depends on a range of circumstances, often best defined by local residents. Some of the factors which help define neighbourhoods are: the geography of an area, the make-up of the local community, sense of identity, and whether people live in a rural, suburban, or urban area.
59. Parishes in many cases may be able to meet the concept of neighbourhoods in an area. Parishes should reflect distinctive and recognisable communities of interest, with their own sense of identity. Like neighbourhoods, the feeling of local community and the wishes of local inhabitants are the primary considerations.
60. Today, there may well be a variety of different communities of interest within a parish; for example, representing age, gender, ethnicity, faith or life-style groups. There are other communities with say specific interests in schools, hospitals or in leisure pursuits. Any number of communities of interest may flourish in a parish but they do not necessarily centre on a specific area or help to define it.



61. Building a sense of local identity may make an important contribution to cohesion where a local area is facing challenges arising from rapid demographic change. In considering the criteria, community governance reviews need to home in on communities as offering a sense of place and of local identity for all residents.

### Effective and convenient local government

62. The Government believes that the effectiveness and convenience of local government is best understood in the context of a local authority's ability to deliver quality services economically and efficiently, and give users of services a democratic voice in the decisions that affect them.
63. Local communities should have access to good quality local services, ideally in one place. A parish council may be well placed to do this. With local parish and town councils in mind, effective and convenient local government essentially means that such councils should be viable in terms of providing at least some local services, and if they are to be convenient they need to be easy to reach and accessible to local people.
64. In responding to the requirement for effective and convenient local government, some parish councils are keen, and have the capacity to take on more in the provision of services. However, it is recognised that not all are in position to do so. The 2007 Act provides a power of well-being to those parish councils who want to take on more, giving them additional powers to enable them to promote the social, economic and environmental well being of their areas. Nevertheless, certain conditions must be met by individual parish councils before this power is extended to them.
65. Wider initiatives such as the Quality Parish Scheme and charters agreed between parish councils and principal councils also help to give a greater understanding of securing effective and convenient local government. In such cases, parish and town councils which are well managed and good at representing local views will be in a better position to work closely with partner authorities to take more responsibility for shaping their area's development and running its services.

### Factors for consideration

66. When reviewing community governance arrangements, principal councils may wish to take into account a number of factors, to help inform their judgement against the statutory criteria.

*The impact on community cohesion of community governance arrangements*

67. Setting up parishes and parish councils clearly offers the opportunity to strengthen community engagement and participation, and generate a positive impact on community cohesion. In conducting community governance reviews (whether initiated by itself or triggered by a valid petition), the principal council should consider the impact on community cohesion when deciding whether or not to set up a parish council.
68. Britain is a more diverse society – ethnically, religiously and culturally – than ever before. Today’s challenge is how best to draw on the benefits that migration and diversity bring while addressing the potential problems and risks to cohesion. Community cohesion is about recognising the impact of change and responding to it. This is a fundamental part of the place-shaping agenda and puts local authorities at the heart of community building.
69. In its response to the recommendations of the Commission on Integration and Cohesion the Government has defined community cohesion as what must happen in all communities to enable different groups of people to get on well together. A key contributor to community cohesion is integration which is what must happen to enable new residents and existing residents to adjust to one another.
70. The Government’s vision of an integrated and cohesive community is based on three foundations:
- People trusting one another and trusting local institutions to act fairly
71. And three key ways of living together:
- A shared future vision and sense of belonging
  - A focus on what new and existing communities have in common, alongside a recognition of the value of diversity
  - Strong and positive relationships between people from different backgrounds.
72. The Commission on Integration and Cohesion’s report, *Our Shared Future*, is clear that communities have expert knowledge about their own circumstances and that actions at the local level contribute to achieving integration and cohesion, with local authorities well placed to identify any pressures. The Commission reports that policy makers and practitioners see civic participation as a key way of building integration and cohesion – from ensuring people have a stake in the community,

to facilitating mixing and engendering a common sense of purpose through shared activities. The 2006 White Paper's proposals for stronger local leadership, greater resident participation in decisions and an enhanced role for community groups contribute to promoting cohesion.

73. Community cohesion is about local communities where people should feel they have a stake in the society, and in the local area where they live by having the opportunity to influence decisions affecting their lives. This may include what type of community governance arrangements they want in their local area.
74. The 2007 Act requires principal councils to have regard to the need to secure that community governance reflects the identity and interests of local communities; the impact on community cohesion is linked strongly to it. Cohesion issues are connected to the way people perceive how their local community is composed and what it represents, and the creation of parishes and parish councils may contribute to improving community cohesion. Community governance arrangements should reflect, and be sufficiently representative of, people living across the whole community and not just a discrete cross-section or small part of it. It would be difficult to think of a situation in which a principal council could make a decision to create a parish and a parish council which reflects community identities and interests in the area and at the same time threatens community cohesion. Principal councils should be able to decline to set up such community governance arrangements where they judged that to do so would not be in the interests of either the local community or surrounding communities, and where the effect would be likely to damage community cohesion.
75. As part of a community governance review a principal council should consider whether a recommendation made by petitioners will undermine community cohesion in any part of its area.
76. Challenges to community cohesion are often very local in nature and because of their knowledge of local communities, local authorities are in a good position to assess these challenges. As for the other considerations set out in this guidance, principal councils will wish to reach a balanced judgement in taking community cohesion into account in community governance arrangements.

*Size, population and boundaries of a local community or parish*

77. Size, population and boundaries of a local community or parish are

linked to aspects of both principal criteria as identified in the 2007 Act, but perhaps more specifically to community governance being effective and convenient. Often it is factors such as the size, population and boundaries which influence whether or not it is going to be viable to create a parish council. Parishes must fall within the boundaries of a single principal council's area.

78. The Local Government Commission for England in its 1993 Report *Renewing Local Government in the English Shires* makes the point that there is a long history of attempts to identify ideal minimum and maximum sizes for local authorities. Instead its preference was for authorities to be based on natural communities and reflecting people's expressed choices. This is even truer today, particularly at the most local level of government. Nevertheless, the size of communities and parishes remains difficult to define.
79. Parish councils in England currently vary greatly in size from those with a handful of electors with some representing hamlets of around 50 people to those in towns with well over 40,000 electors. Geography and natural boundaries; population size; and to an extent 'council size' (the term used by the LGBCE to describe the number of councillors who are elected to a local authority) may influence how small or large a parish council can be.
80. The general rule should be that the parish is based on an area which reflects community identity and interest and which is of a size which is viable as an administrative unit of local government. This is generally because of the representative nature of parish councils and the need for them to reflect closely the identity of their communities. It is desirable that any recommendations should be for parishes or groups of parishes with a population of a sufficient size to adequately represent their communities and to justify the establishment of a parish council in each. Nevertheless as previously noted, it is recognised that there are enormous variations in the size of parishes, although most parishes are below 12,000 in population.
81. A parish council should be in a position to provide some basic services and many larger parishes will be able to offer much more to their local communities. However, it would not be practical or desirable to set a rigid limit for the size of a parish whether it is in a rural or urban area, although higher population figures are generally more likely to occur in urban areas. Equally, a parish could be based on a small but discrete housing estate rather than on the town within which the estate lies.
82. There may be cases where larger parishes would best suit the needs

of the area. These might include places where the division of a cohesive area, such as a Charter Trustee town (see paragraphs 133 to 134), would not reflect the sense of community that needs to lie behind all parishes; or places where there were no recognisable smaller communities.

83. As far as boundaries between parishes are concerned, these should reflect the “no-man’s land” between communities represented by areas of low population or barriers such as rivers, roads or railways. They need to be, and be likely to remain, easily identifiable. For instance, factors to consider include parks and recreation grounds which sometimes provide natural breaks between communities but they can equally act as focal points. A single community would be unlikely to straddle a river where there are no crossing points, or a large area of moor land or marshland. Another example might be where a community appeared to be divided by a motorway (unless connected by walkways at each end). Whatever boundaries are selected they need to be, and be likely to remain, easily identifiable.
84. In many cases a boundary change between existing parishes, or parishes and unparished areas, rather than the creation of an entirely new parish, will be sufficient to ensure that parish arrangements reflect local identities and facilitate effective and convenient local government. For example, over time, communities may expand with new housing developments. This can often lead to existing parish boundaries becoming anomalous as new houses are built across them resulting in people being in different parishes from their neighbours.
85. A review of parish boundaries is an opportunity to put in place strong boundaries, tied to firm ground detail, and remove anomalous parish boundaries. Since the new boundaries are likely to be used to provide the building blocks for district ward, London borough ward, county division and parliamentary constituency boundaries in future reviews for such councils, it is important that principal councils seek to address parish boundary issues at regular intervals.

### Parish meetings and parish councils

86. Under the Local Government Act 1972 all parishes, whether or not they have a parish council, must have a parish meeting. In many parishes the requirement to have a parish meeting takes the form of at least one annual meeting, or more often several meetings during each year, organised (where one exists) by the parish council or if not by the parish meeting itself. The parish meeting of a parish consists of the local government electors for the parish, and as such local

electors are invited to attend these meetings. Parish meetings have a number of functions, powers and rights of notification and consultation. The trustees of a parish meeting hold property and act on its behalf. Depending on the number of local government electors in the parish, there are different rules about whether or not a parish council must be created for the parish, or whether it is discretionary.

87. Where principal councils are creating new parishes, the 2007 Act requires them to make recommendations about whether or not a new parish should be constituted in their area. New parishes can be constituted in a number of different ways, including by creating a parish in an area that is not currently parished, amalgamating two or more parishes and separating part of a parish, with or without aggregating it with parts of other parishes.
88. Section 94 of the 2007 Act applies in relation to these recommendations. It places principal councils under a duty to recommend that a parish should have a council in parishes which have 1000 electors or more. In parishes with 151 to 999 electors the principal council may recommend the creation of either a parish council or a parish meeting. In parishes with 150 or fewer electors principal councils are unable to recommend that a parish council should be created and therefore only a parish meeting can be created. The aim of these thresholds is to extend the more direct participatory form of governance provided by parish meetings to a larger numbers of electors. Equally, the thresholds help to ensure that both the population of a new parish for which a council is to be established is of sufficient size to justify its establishment and also that local people are adequately represented.
89. One of the reasons for these differing thresholds is that the Government recognises the difficulty which sometimes exists in small parishes, in particular, in managing to get sufficient numbers to stand for election to the parish council. However, the thresholds identified above do not apply to existing parish councils. If the community governance review concludes that the existence of the parish council reflects community identities and provides effective and convenient local government, despite the small number of electors, then it can recommend that the parish council should continue in existence. So, where an existing parish of 150 or less electors already has a parish council with the minimum number of five parish councillors it can continue to have a parish council.
90. If a principal council chooses to establish a parish council, or if an existing parish whose boundaries are being changed has a parish council, the principal authority must consult on, and put in place the

necessary electoral arrangements for that parish. (See Chapter 5 Electoral Arrangements.)

## Recommendations and decisions on the outcome of community governance reviews

91. Community governance reviews will make recommendations on those matters they have considered, as defined by the terms of reference set at the start of the review.
92. A principal council must make recommendations as to:
  - a) whether a new parish or any new parishes should be constituted;
  - b) whether existing parishes should or should not be abolished or whether the area of existing parishes should be altered; or
  - c) what the electoral arrangements for new or existing parishes, which are to have parish councils, should be.
93. It may also make recommendations about:
  - a) the grouping or degrouping of parishes;
  - b) adding parishes to an existing group of parishes; or
  - c) making related alterations to the boundaries of a principal councils' electoral areas.
94. In deciding what recommendations to make the principal council must have regard to the need to secure that community governance reflects the identities and interests of the community in that area and is effective and convenient. The 2007 Act provides that it must also take into account any other arrangements (apart from those relating to parishes and their institutions) that have already been made, or that could be made, for the purposes of community representation or community engagement.
95. The recommendations must take account of any representations received and should be supported by evidence which demonstrates that the recommended community governance arrangements would meet the criteria set out in the 2007 Act. Where a principal council has conducted a review following the receipt of a petition, it will remain open to the council to make a recommendation which is different to the recommendation the petitioners wished the review to make. This will particularly be the case where the recommendation is not in the interests of the wider local community, such as where giving effect to it would be likely to damage community relations by dividing communities along ethnic, religious or cultural lines.

96. In making its recommendations, the review should consider the information it has received in the form of expressions of local opinion on the matters considered by the review, representations made by local people and other interested persons, and also use its own knowledge of the local area. It may be that much of this information can be gained through the consultation which the council will have held with local people and also the council's wider engagement with local people on other matters. In taking this evidence into account and judging the criteria in the 2007 Act against it, a principal council may reasonably conclude that a recommendation set out in a petition should not be made. For example, a recommendation to abolish or establish a parish council, may negatively impact on community cohesion, either within the proposed parish area, or in the wider community within which it would be located, and therefore should not be made.
97. The aim of the 2007 Act is to open up a wider choice of governance to communities at the most local level. However, the Government considers that there is sufficient flexibility for principal councils not to feel 'forced' to recommend that the matters included in every petition must be implemented.
98. Under the 2007 Act the principal council must both publish its recommendations and ensure that those who may have an interest are informed of them. In taking a decision as to whether or not to give effect to a recommendation, the principal council must have regard to the statutory criteria (see paragraph 51). After taking a decision on the extent to which the council will give effect to the recommendations made in a community governance review, the council must publish its decision and its reasons for taking that decision. It must also take sufficient steps to ensure that persons who may be interested in the review are informed of the decision and the reasons for it. Who should be informed will depend on local circumstances. Publicising the outcome of reviews is dealt with in the next section on implementation.

#### *Implementation of community governance reviews by order*

99. There are a number of steps that a principal council must take to publicise the outcome of any review it has conducted, and to provide information about that outcome to the bodies it must notify following any reorganisation order it makes to implement the review. Community governance reviews should be conducted transparently so that local people and other local stakeholders who may have an interest are made aware of the outcome of the decisions taken on them and the reasons behind these decisions.



100. If the council implements the recommendations made in its review, there are other steps it is required to undertake. These include depositing copies of the reorganisation order<sup>5</sup> which the principal council will need to draw up to give effect to its decisions. Besides depositing at its main office a copy of the reorganisation order, it should also deposit a map showing the effects of the order in detail which should be available for inspection by the public at all reasonable times (i.e. during normal working hours). The 2007 Act also requires the council to make available a document setting out the reasons for the decisions it has taken (including where it has decided to make no change following a community governance review) and to publicise these reasons.
101. The principal council must publicise how the council has given effect to the review, and that the order and map are available for public inspection as set above. Other means of publicity it may wish to consider are through publication on the council's website, in local newspapers, on notice boards in public places, and in local libraries, town halls or other local offices. In addition, after a principal council has made a reorganisation order, as soon as practicable, it must inform the following organisations that the order has been made:
- a) the Secretary of State for Communities and Local Government
  - b) the LGBCE
  - c) the Office of National Statistics
  - d) the Director General of the Ordnance Survey
  - e) any other principal council (e.g. a county council) whose area the order relates to.
102. The Audit Commission has statutory responsibility for appointing external auditors to all local councils in England. For the purposes of its audit appointment functions the Commission needs to be aware of changes emerging from community governance reviews. Therefore, principal councils should inform the Audit Commission of any reorganisation orders made to implement the recommendations of community governance reviews.
103. Section 97 of the 2007 Act provides for regulations to make incidental, consequential, transitional or supplementary provision for

---

<sup>5</sup> A copy of a model reorganisation order with different examples of recommendations can be viewed on the Communities and Local Government website. It may help principal councils to draw up reorganisation orders which could be adapted to their own needs and circumstances. Principal councils are not obliged to follow this example. It is offered on an advisory basis and principal councils will want to seek their own legal advice that any orders they produce meet the necessary legal requirements.

the purposes of, or in consequence of, reorganisation orders. Two sets of regulations have been made under the 2007 Act, which apply to reorganisation orders - both came into force on 8 April 2008. The first of these, the Local Government (Parishes and Parish Councils) (England) Regulations 2008 No.625 make provisions in relation to matters such as the distribution of property and the rights and liabilities of parish councils affected by a reorganisation order. The second set, the Local Government Finance (New Parishes) Regulations 2008 No.626 deal with the setting of precepts for new parishes.

104. Section 99 of the 2007 Act provides for public bodies affected by reorganisation following a community governance review to make agreements about incidental matters and what those agreements may provide for. So as to ensure that a reorganisation order has effect subject to the terms of any such agreement, principal councils should make provision for this in the reorganisation order. An example provision has been included in the model reorganisation order which can be found on the Communities and Local Government website (see footnote 2).

## Maps of parish changes and mapping conventions

105. To assist those who will have an interest in any recommendations made by the principal council when conducting a community governance review and to accompany the reorganisation order, clear high quality maps should be produced to a standard equivalent to using Ordnance Survey large scale data as a base. Maps can be graphically presented at a reduced scale for convenience but preferably no smaller than 1:10,000 scale. Each recommendation and order should be depicted on a map or maps. The mapping should clearly show the existing parish ward, parish, district or London borough boundaries and all proposed parish ward and parish boundaries in the area(s) affected, or given effect to in a reorganisation order.
106. It can be useful to include some positional information to identify the location of the area(s) in relation to the complete area of the principal council. A colour key can be included to clearly identify each boundary type. Where there are only proposed changes to an existing parish boundary alignment it can be helpful to show in translucent colour any areas to be transferred from one parish to another. This indicates clearly the extent of the proposed change. It can also be beneficial to add unique references to all areas of transfer to create a

cross reference to the re-organisation order document. Applying a reference to each order map should also be considered so that a link is created with the re-organisation order.

## Section 4: Other aspects of community governance reviews

### Parish names and alternative styles for parishes

107. Prior to the 2007 Act, a parish could be given the status of a town under section 245 of the Local Government Act 1972. “Town” status continues to be available to a parish. In addition, the 2007 Act inserted sections 12A and 12B into the 1972 Act to offer a further choice of alternative styles for a parish: community, neighbourhood and village. However, for as long as the parish has an alternative style, it will not also be able to have the status of a town and vice versa.
108. The ‘name’ of a parish refers to the geographical name of the area concerned and can be changed independent of a review by a principal council at the request of a parish council or parish meeting (where there is no parish council)<sup>6</sup>. A change in the status or ‘style’ of a parish allows for that area to be known as a town, community, neighbourhood or village, rather than as a parish. The status or style of the parish will be reflected in the name of any council of the parish, the parish meeting, any parish trustees, and the chairman or vice-chairman of the parish meeting or of any parish council. So, for example, the council of a parish which uses the style ‘village’ will be known as the ‘village council’ and its councillors as the ‘village councillors’, etc.
109. References in legislation to a ‘parish’ should be taken to include a parish which has an alternative style, as is the case in relation to a parish which has the status of a town. The same applies in relation to references in legislation to a ‘parish meeting’, ‘parish council’, ‘parish councillor’, ‘parish trustees’, etc in connection with a parish which has an alternative style.
110. The Government recognises that in long established parishes, particularly in rural areas, local people may wish to retain the name of their parish and the existing style of their parish councils, - although others may prefer “village” or another style. Following a community governance review, in areas previously unparished where a new parish is being created, people living there may wish for the style of their parish council to reflect the local community in a different way and may prefer one of the alternative styles. This may well be the case for those living in urban areas. Local authorities will wish to take

---

<sup>6</sup> Section 75 Local Government Act 1972

account of these preferences in deciding the name of the parish and the chosen style.

111. Where the review relates to a new parish, it is for the principal council, in the first instance, to make recommendations as to the geographical name of the new parish, and as to whether or not it should have one of the alternative styles. So far as existing parishes under review by principal councils are concerned, the review must make recommendations as to whether the geographical name of the parish should be changed, but it may not make any recommendations for the parish about alternative style. It will be for the parish council or parish meeting to resolve whether the parish should have one of the alternative styles.
112. In relation to a group of parishes, provision about alternative styles for the group may be made by the principal council in a reorganisation order that forms that group, adds a parish to an existing group or de-groups a parish or group. A grouping containing a mixture of styles is not permitted under section 11A(4) of the Local Government Act 1972. Where an individual parish is removed from a group through a de-grouping order the parish must retain the style it had when it was part of the group until such time as the parish council or meeting resolves to adopt an alternative style. Provision about alternative styles in relation to groups will normally be made independently of a community governance review.

### Grouping or degrouping parishes

113. Section 91 of the 2007 Act provides for a community governance review to recommend the grouping or degrouping of parishes by principal councils. As mentioned in chapter 3, (paragraph 87) unless they already exist as functioning parish councils smaller new parishes of less than 150 electors will be unable to establish their own parish council under the 2007 Act.
114. In some cases, it may be preferable to group together parishes so as to allow a common parish council to be formed. Degrouping may offer the reverse possibilities perhaps where local communities have expanded. Such proposals are worth considering and may avoid the need for substantive changes to parish boundaries, the creation of new parishes or the abolition of very small parishes where, despite their size, they still reflect community identity. Grouping or degrouping needs to be compatible with the retention of community interests. It would be inappropriate for it to be used to build artificially large units under single parish councils.
115. Section 91 also requires a review to consider the electoral arrangements

of a grouped parish council or of a parish council established after a parish is de-grouped. Each parish in a group must return at least one councillor.

116. When making a recommendation to group or de-group parishes, the principal council may make a request to the LGBCE to make a related alteration to the boundaries of district or London borough wards or county divisions. For example, if a principal council decided to add an additional parish to a group, because of their shared community identities, it may wish to recommend that all of the parishes in the group be included in the same district ward (see Chapter 6 for more details).

### Abolishing parishes, and dissolving parish councils

117. While the Government expects to see a trend in the creation, rather than the abolition, of parishes, there are circumstances where the principal council may conclude that the provision of effective and convenient local government and/or the reflection of community identity and interests may be best met, for example, by the abolition of a number of small parishes and the creation of a larger parish covering the same area. If, following a review, a principal council believes that this would provide the most appropriate community governance arrangements, then it will wish to make this recommendation; the same procedures apply to any recommendation to abolish a parish and/or parish council as to other recommendations (see paragraph 90 -97). Regulations<sup>7</sup> provide for the transfer of property, rights and liabilities of a parish council to the new successor parish council, or where none is proposed to the principal council itself.
118. Section 88 of the 2007 Act provides for a community governance review to recommend the alteration of the area of, or the abolition of, an existing parish as a result of a review. The area of abolished parishes does not have to be redistributed to other parishes, an area can become unparished. However, it is the Government's view that it would be undesirable to see existing parishes abolished with the area becoming unparished with no community governance arrangements in place.
119. The abolition of parishes should not be undertaken unless clearly justified. Any decision a principal council may make on whether to abolish a parish should not be taken lightly. Under the previous parish review legislation, the Local Government and Rating Act 1997, the Secretary of State considered very carefully recommendations made

<sup>7</sup> The Local Government (Parishes and Parish Councils) (England) Regulations 2008 No.625.

by principal councils for the abolition of any parish (without replacement) given that to abolish parish areas removes a tier of local government. Between 1997 and 2008, the Government rarely received proposals to abolish parish councils, it received only four cases seeking abolition and of these only one was approved for abolition by the Secretary of State.

120. Exceptionally, there may be circumstances where abolition may be the most appropriate way forward. Under the 2007 Act provisions, the principal council would need to consider local opinion, including that of parish councillors and local electors. It would need to find evidence that the abolition of a parish council was justified, and that there was clear and sustained local support for such action. A factor taken into account by the Government in deciding abolition cases, was that local support for abolition needed to have been demonstrated over at least a period equivalent to two terms of office of the parish councillors (i.e. 8 years), and that such support was sufficiently informed. This means a properly constituted parish council should have had an opportunity to exercise its functions so that local people can judge its ability to contribute to local quality of life.
121. Where a community governance review is considering abolishing a parish council we would expect the review to consider what arrangements will be in place to engage with the communities in those areas once the parish is abolished. These arrangements might be an alternative forum run by or for the local community, or perhaps a residents' association. It is doubtful however, that abolition of a parish and its council could ever be justified as the most appropriate action in response to a particular contentious issue in the area or decision of the parish council.
122. In future, principal councils will wish to consider the sort of principles identified above in arriving at their decisions on whether or not to abolish a parish council. In doing so, they will be aware that decisions about community governance arrangements, including decisions for the abolition of a parish council, may attract a challenge by way of judicial review.
123. The 2006 White Paper underlined the Government's commitment to parish councils as an established and valued form of neighbourhood democracy with an important role to play in both rural, and increasingly urban, areas.
124. Section 10 of the Local Government Act 1972 makes provision for the dissolution of parish councils in parishes with very low populations, but not for the de-parishing of the area. Recommendations for the

dissolution of a parish council which is not in this position are undesirable, unless associated either with boundary changes which amalgamate parishes or divide a parish or with plans for a parish to be grouped with others under a common parish council (see paragraphs 112 to 115). Recommendations for changing a parish area (or part of a parish area) into an unparished area are also undesirable unless that area is amalgamated with an existing unparished urban area.

## Rural areas

125. About 90% of the geographical area of England is covered by a parish, and this is mostly in rural or semi-rural areas. So, most populated rural areas already have a structure of local government that includes parishes and many of these have been in existence for hundreds of years. It is desirable that any changes do not upset historic traditions but do reflect changes that have happened over time, such as population shift or additional development, which may have led to a different community identity.
126. The focus of community feeling will differ from place to place and between different types of settlement. A scatter of hamlets may have a feeling of community within each hamlet, meriting a separate parish for each one, or amongst a number of hamlets, for which one parish covering all may be appropriate. Where a number of hamlets surround a village a parish could be based on the village and its environs, provided that the sense of individual identity is not lost.
127. In rural areas, the Government wants to encourage the involvement of local people in developing their community and having a part to play in shaping the decisions that affect them. A parish can be a useful and democratic means of achieving this.

## London

128. The London Government Act 1963 abolished parishes existing at the time within London. When the boundaries for Greater London were established, they were adjusted to allow the surrounding shire counties to keep parishes that were in the fringe areas. Since then, London has been the only part of England not to have parishes or parish councils.
129. The Government's view is that Londoners should have the same rights as the rest of the country. The 2007 Act corrects this anomaly to allow London boroughs the possibility to exercise the same community governance powers as other principal councils including being able to set up parishes and parish councils. Similarly, local



electors in London boroughs are, as elsewhere in England, able to petition for a community governance review.

130. In London, there is the same possibility to choose a style for a parish perhaps to reflect better the local urban area like “community” or “neighbourhood”. Whilst some parts of London are populated by people who may be more transient or mobile than elsewhere, there are equally areas of the capital where there are stable populations who may wish to see the creation of a parish council for their local area.

#### *Other urban areas*

131. There are parts of rural or semi-rural England which are unparished, but the opportunities for establishing new parishes are increasingly to be found in urban and suburban areas. It is possible that identifying the community upon which a parish might be based may be more difficult to discern in some urban areas. A “community” perhaps already represented by a voluntary organisation or a community endeavour, such as a Neighbourhood Watch area or a residents’ association, may indicate a suitable area on which to base proposals for a new or altered parish, (see paragraphs 135 -145).
132. Much of the information described in Chapter 3 on the identities and interests of local communities is applicable to urban areas. There are parishes in parts of some large cities or unitary authorities, as well as a number of parishes in the metropolitan boroughs of the larger conurbations. Some of these parishes have been created under the Local Government and Rating Act 1997 Act, but in most metropolitan boroughs these are on the more sparsely populated peripheries (the originals having been transferred, as part of former rural districts, to the metropolitan counties in 1974).
133. The lower population limits and grouping mentioned above are more relevant to rural areas than to urban areas, although both are applicable in law. The general rule is that the parish is based on an area which reflects community identity and interest and which is viable as an administrative unit. In urban areas this may mean, for example, that a parish should be based on a housing estate rather than on the town within which the estate lies. The larger the town, the greater will be the scope for identification of distinct communities within it.

#### *Charter trustee areas*

134. Charter trustees were established following the local government reorganisations in the early 1970s and 1990s to preserve the historic

identity of former boroughs or cities, most with relatively large populations. To this end, charter trustees have the power to carry out ceremonial functions. They were not intended to act as administrative units. Proposals to create a parish or parish council covering all or part of a charter trustee area need to be judged in particular against the following considerations:

- a) the effect on the historic cohesiveness of the area;
  - b) what are the other community interests in the area? Is there a demonstrable sense of community identity encompassing the charter trustee area? Are there smaller areas within it which have a demonstrable community identity and which would be viable as administrative units?
135. These issues need to be taken into account in those areas with certain cities or boroughs which will be affected by any consequent reorganisation from the structural and boundary changes in the 2007 Act.

### Other (non-parish) forms of community governance

136. In conducting a community governance review, principal councils must consider other forms of community governance as alternatives or stages towards establishing parish councils. Section 93(5) of the 2007 Act states that 'In deciding what recommendations to make [in the community governance review] the principal council must take into account any other arrangements... that have already been made or that could be made for the purposes of community representation or community engagement in respect of the area under review'. The following paragraphs consider other types of viable community representation which may be more appropriate to some areas than parish councils, or may provide stages building towards the creation of a parish council. There is sometimes evidence locally of an existing community governance infrastructure and of good practice which are successfully creating opportunities for engagement, empowerment and co-ordination in local communities.
137. However, what sets parish councils apart from other kinds of governance is the fact they are a democratically elected tier of local government, independent of other council tiers and budgets, and possess specific powers. This is an important distinction to make. Parish councils are the foundation stones for other levels of local government in England. Their directly elected parish councillors represent local communities in a way that other bodies, however worthy, cannot since such organisations do not have representatives directly elected to those bodies.

138. The 2006 White Paper recommended that local communities should be able to take more responsibilities for local issues affecting their area. Key to this approach is community empowerment, and the ability of various existing organisations themselves to see through specific projects to tackle local issues. Structures such as local residents' associations, community or neighbourhood forums and area committees have an important role to play in local community governance.
139. At the neighbourhood level, there are various initiatives in existence, which through being representative and accountable can effectively empower local people. They have varying degrees of power and influence, and commensurate levels of transparency and accountability.

#### *Area committees*

140. Area committees are part of the structure of some principal councils (e.g. district, unitary and London borough), where they choose to have them. Area committees are a key initiative for enabling local government to fulfil community governance roles and also to deliver government policy on issues affecting social inclusion in local communities. Principal councils also provide resources for area committees, and their councillors are commonly integral to their constitution. Area committees can cover large areas and exist to advise or make decisions on specific responsibilities that can include parks, off-street parking, public toilets, street cleaning, abandoned vehicles and planning applications amongst others. Also, more widely, they contribute to shaping council services and improving local service provision.

#### *Neighbourhood management*

141. Neighbourhood management programmes are similarly set up by principal councils and may be led by one of a number of bodies. The expansion of neighbourhood management was promoted in the 2006 White Paper as a tool to enable local authorities to deliver more responsive services through their empowerment of citizens and communities. Their purpose is to create the opportunity for residents to work with local agencies, usually facilitated by a neighbourhood manager, to improve services at the neighbourhood level.
142. Neighbourhood management arrangements aim to improve 'quality of life' through implementation of (rather than advising or making decisions on) better management of local environment, increasing community safety, improving housing stock, working with young people, and encouraging employment opportunities, supported

strategically by relevant stakeholders and Local Strategic Partnerships. They tend to cover smaller populations than area committees. The 2006 White Paper recommends that take up of neighbourhood management should be encouraged and that Government should work with local authorities pioneering the approach, to raise the profile of achievements and promote adoption elsewhere.

#### *Tenant Management Organisations*

143. The 2006 White Paper makes a series of proposals that facilitate the empowerment of residents through Tenant Management Organisations (TMOs). Tenant Management Organisations are established by the local housing authority; they usually function on urban housing estates and can take responsibility for housing services (such as collecting rents and service charges and organising repairs and maintenance) from the local housing authority under the Housing (Right to Manage) (England) Regulations 2008. The 2006 White Paper promoted the role of TMOs and recommended simplifying and extending their scope; enabling them to take on additional services and undertake further representation of residents within neighbourhoods. A TMO is an independent legal body and usually elects a tenant-led management committee to the organisation; they can also enter into a legal management agreement with landlords.

#### *Area/Community Forums*

144. Area or community forums (including civic forums) can be set up by the principal council, or created by local residents to act as a mechanism to give communities a say on principal council matters or local issues. Sometimes forums are set up to comment on a specific project or initiative that will impact upon the local area, and so may be time-limited. They increase participation and consultation, aiming to influence decision making, rather than having powers to implement services. They vary in size, purpose and impact, but membership usually consists of people working or living in a specific area. Some forums also include ward councillors, and representatives from the council and relevant stakeholders can attend meetings.

#### *Residents' and Tenants' Associations*

145. Residents' and Tenants' associations enable local people to participate in local issues affecting their neighbourhood or housing estate, including the upkeep of the local environment, crime, sometimes dealing with anti-social behaviour matters, or on some estates, housing management. They can be set up by any group of people living in the same area and can choose who members will be;

how they will be represented and what they want to achieve. In the case of tenants' and residents' associations on estates, they may be established with direct support from the principal council, as a mechanism for communicating with the tenants and residents on its estates. To engage effectively with other organisations, residents' and tenants' associations must be able to show that they are accountable and represent the views of the whole community, rather than narrow self interests of just a few local people.

#### *Community Associations*

146. Community associations offer a particular and widespread democratic model for local residents and local community-based organisations in a defined neighbourhood to work together for the benefit of that neighbourhood. They can use a model constitution registered with the Charity Commission. The principal council may also be represented on the association's committee. They usually manage a community centre as a base for their activities. Membership is open to everyone resident in the area.

## Section 5: Electoral arrangements

### Introduction

147. The purpose of a review undertaken by a principal council, or a petition from the electorate, is likely primarily to concern the administrative boundaries of a new or existing parish. As discussed earlier (Chapter 2), this might be in the light of growth from within an existing parish or a locally identified need for a new form of community governance. However, in addition to these primary concerns, principal authorities will also need to consider the governance of new or altered parishes. The principal council must have regard to the need for community governance within the area under review to reflect the identities and interests of the community in that area, and to ensure that the governance is effective and convenient. Further information on electoral arrangements is available from the LGBCE's website [www.LGBCE.org.uk](http://www.LGBCE.org.uk)

### What are electoral arrangements?

148. Electoral arrangements in relation to an existing or proposed parish council are defined in the 2007 Act and are explained in detail below:
- a) ordinary year of election – the year in which ordinary elections of parish councillors are to be held;
  - b) council size – the number of councillors to be elected to the council, or (in the case of a common council) the number of councillors to be elected to the council by local electors in each parish;
  - c) parish warding – whether the parish should be divided into wards for the purpose of electing councillors. This includes considering the number and boundaries of any such wards, the number of councillors to be elected for any such ward and the name of any such ward.

### Ordinary year of election

149. Ordinary parish elections are held once every four years with all councillors being elected at the same time. The standard parish electoral cycle is for elections in 2011, 2015 and every four years after 2015, but parish elections may be held in other years so that they can coincide with elections in associated district or London borough wards or county divisions and share costs. For example, all London borough ward elections take place in 2010, 2014 and so on. We would therefore expect parish elections in London to take place in these years.

150. New or revised parish electoral arrangements come into force at ordinary parish elections, rather than parish by-elections, so they usually have to wait until the next scheduled parish elections. They can come into force sooner only if the terms of office of sitting parish councillors are cut so that earlier parish elections may be held for terms of office which depend on whether the parish is to return to its normal year of election.
151. For example, a parish that had elections in 2007 could wait until its next scheduled elections in 2011 for new parish wards to come into force. Alternatively, the new parish wards could have come into force at elections in 2009 if the terms of office of the councillors elected in 2007 were cut to two years. If the elections in 2009 were for two-year terms of office then the parish council could return to its normal electoral cycle in 2011.
152. Alternatively, if new or revised parish electoral arrangements are to be implemented in the third year of sitting councillors' term of office, provision can be made to cut short the term of office of existing councillors to three years. Elections could then take place with all councillors serving a five-year term of office, enabling the parish to return to its normal year of election.

### Council size

153. Council size is the term used to describe the number of councillors to be elected to the whole council. The 1972 Act, as amended, specifies that each parish council must have at least five councillors; there is no maximum number. There are no rules relating to the allocation of those councillors between parish wards but each parish ward, and each parish grouped under a common parish council, must have at least one parish councillor.
154. In practice, there is a wide variation of council size between parish councils. That variation appears to be influenced by population. Research by the Aston Business School Parish and Town Councils in England (HMSO, 1992), found that the typical parish council representing less than 500 people had between 5 and 8 councillors; those between 501 and 2,500 had 6 to 12 councillors; and those between 2,501 and 10,000 had 9 to 16 councillors. Most parish councils with a population of between 10,001 and 20,000 had between 13 and 27 councillors, while almost all councils representing a population of over 20,000 had between 13 and 31 councillors.
155. The LGBCE has no reason to believe that this pattern of council size to population has altered significantly since the research was

conducted. Although not an exact match, it broadly reflects the council size range set out in the National Association of Local Councils Circular 1126; the Circular suggested that the minimum number of councillors for any parish should be 7 and the maximum 25.

156. In considering the issue of council size, the LGBCE is of the view that each area should be considered on its own merits, having regard to its population, geography and the pattern of communities. Nevertheless, having regard to the current powers of parish councils, it should consider the broad pattern of existing council sizes. This pattern appears to have stood the test of time and, in the absence of evidence to the contrary, to have provided for effective and convenient local government.
157. Principal councils should also bear in mind that the conduct of parish council business does not usually require a large body of councillors. In addition, historically many parish councils, particularly smaller ones, have found difficulty in attracting sufficient candidates to stand for election. This has led to uncontested elections and/or a need to co-opt members in order to fill vacancies. However, a parish council's budget and planned or actual level of service provision may also be important factors in reaching conclusions on council size.

## Parish warding

158. Parish warding should be considered as part of a community governance review. Parish warding is the division of a parish into wards for the purpose of electing councillors. This includes the number and boundaries of any wards, the number of councillors to be elected for any ward and the names of wards.
159. In considering whether or not a parish should be divided into wards, the 2007 Act requires that consideration be given to whether:
  - a) the number, or distribution of the local government electors for the parish would make a single election of councillors impracticable or inconvenient; and
  - b) it is desirable that any area or areas of the parish should be separately represented.
160. Accordingly, principal councils should consider not only the size of the electorate in the area but also the distribution of communities within it. The warding of parishes in largely rural areas that are based predominantly on a single centrally-located village may not be justified. Conversely, warding may be appropriate where the parish



encompasses a number of villages with separate identities, a village with a large rural hinterland or where, on the edges of towns, there has been some urban overspill into the parish. However, each case should be considered on its merits, and on the basis of the information and evidence provided during the course of the review.

161. There is likely to be a stronger case for the warding of urban parishes, unless they have particularly low electorates or are based on a particular locality. In urban areas community identity tends to focus on a locality, whether this be a housing estate, a shopping centre or community facilities. Each locality is likely to have its own sense of identity. Again, principal councils should consider each case on its merits having regard to information and evidence generated during the review. (See also under Chapter 3, paragraphs 54 to 60).

*The number and boundaries of parish wards*

162. In reaching conclusions on the boundaries between parish wards the principal council should take account of community identity and interests in the area, and consider whether any particular ties or linkages might be broken by the drawing of particular ward boundaries. Principal councils should seek views on such matters during the course of a review. They will, however, be mindful that proposals which are intended to reflect community identity and local linkages should be justified in terms of sound and demonstrable evidence of those identities and linkages.
163. The principal council should also consider the desirability of parish warding in circumstances where the parish is divided by district or London borough ward and/or county division boundaries. It should be mindful of the provisions of Schedule 2 (electoral change in England: considerations on review) to the Local Democracy, Economic Development and Construction Act 2009 in relation to reviews of district or London borough and county council electoral arrangements. These provide that when the LGBCE is making changes to principal council electoral arrangements, no unwarded parish should be divided by a district or London borough ward or county division boundary, and that no parish ward should be split by such a boundary. While these provisions do not apply to reviews of parish electoral arrangements, the LGBCE believes that, in the interests of effective and convenient local government, they are relevant considerations for principal councils to take into account when undertaking community governance reviews. For example, if a principal council chooses to establish a new parish in an area which is covered by two or more district or London borough wards or county division boundaries it may also wish to consider the merit of putting

parish warding in place to reflect that ward and/or division.

164. When considering parish ward boundaries principal councils should ensure they consider the desirability of fixing boundaries which are, and will remain, easily identifiable, as well as taking into account any local ties which will be broken by the fixing of any particular boundaries.

*The number of councillors to be elected for parish wards*

165. If a principal council decides that a parish should be warded, it should give consideration to the levels of representation between each ward. That is to say, the number of councillors to be elected from each ward and the number of electors they represent.
166. It is an important democratic principle that each person's vote should be of equal weight so far as possible, having regard to other legitimate competing factors, when it comes to the election of councillors. There is no provision in legislation that each parish councillor should represent, as nearly as may be, the same number of electors. However, the LGBCE believes it is not in the interests of effective and convenient local government, either for voters or councillors, to have significant differences in levels of representation between different parish wards. Such variations could make it difficult, in workload terms, for councillors to adequately represent the interests of residents. There is also a risk that where one or more wards of a parish are over-represented by councillors, the residents of those wards (and their councillors) could be perceived as having more influence than others on the council.
167. The LGBCE offers no specific guidelines for what might constitute significant differences in levels of representation; each case will need to be considered on its merits. Principal councils should be mindful that, for the most part, parish wards are likely to be significantly smaller than district or London borough wards. As a consequence, imbalances expressed in percentage terms may be misleading, disguising the fact that high variations between the number of electors per councillor could be caused by only a few dozen electors.
168. Where a community governance review recommends that two or more parishes should be grouped under a common parish council, then the principal council must take into account the same considerations when considering the number of councillors to be elected by each parish within the group.

*Names of parish wards*

169. In considering the names of parish wards, the principal council should give some thought to existing local or historic places so that, where appropriate, these are reflected and there should be a presumption in favour of ward names proposed by local interested parties.

**Electorate forecasts**

170. When considering the electoral arrangements for a parish, whether it is warded or not, the principal council must also consider any change in the number or distribution of the electors which is likely to occur in the period of five years beginning with the day when the review starts. The most recent electoral register should be used to gain an accurate figure for the existing electorate. Planning assumptions and likely growth within the area, based on planning permissions granted, local plans or, where they are in place, local development frameworks should be used to project an accurate five year electorate forecast. This ensures that the review does not simply reflect a single moment but takes account of expected population movements in the short- to medium-term.
171. Electorate forecasts should be made available to all interested parties as early as possible in the review process, ideally before the formal commencement of the review so that they are available to all who may wish to make representations.

**Consent/Protected electoral arrangements**

172. If, as part of a community governance review, a principal council wishes to alter the electoral arrangements for a parish whose existing electoral arrangements were put in place within the previous five years by an order made either by the Secretary of State, the Electoral Commission, or the LGBCE, the consent of the LGBCE is required. This includes proposals to change the names of parish wards.
173. The principal council must write to the LGBCE detailing its proposal and requesting consent. The LGBCE will consider the request and will seek to ensure that the proposals do not conflict with the original recommendations of the electoral review, and that they are fair and reasonable.
174. Where a request for consent is made to the LGBCE, it will expect to receive evidence that the principal council has consulted with electors in the relevant parish(es) as part of the community governance review and will wish to receive details of the outcome of that review.
175. For changes to the number or boundaries of parish wards, the

principal council will also need to provide the LGBCE with an existing and five-year forecast of electors in the parish(es) affected. Five-year forecasts should be accurate from the day that the review began. Both existing and forecast figures should be provided for the existing parish (and parish wards where relevant) and the proposed parish (and parish wards where relevant).

176. If the LGBCE consents to the changes it will inform the principal council which can then implement the proposed changes by local order. No LGBCE order is required. Conversely, if the LGBCE declines to give consent, no local order may be made by the local authority until the five-year period has expired.

## Section 6: Consequential recommendations for related alterations to the boundaries of principal council's wards and/or divisions

177. As part of a community governance review, principal councils may wish to consider whether to request the LGBCE to make changes to the boundaries of district or London borough wards or county divisions to reflect the changes made at parish level.
178. There are three instances when a principal council may wish to consider related alterations to the boundaries of wards or divisions following:
- the creation, alteration or abolition of a parish
  - the establishment of new or altered parish ward boundaries
  - a grouping or de-grouping of parishes.
179. In the interests of maintaining coterminosity between the boundaries of principal authority electoral areas and the boundaries of parishes and parish wards, principal councils may wish to consider as part of a community governance review whether to make consequential recommendations to the LGBCE for related alterations to the boundaries of any affected district or London borough wards and/or county divisions. The Commission may agree to make related alterations to ensure coterminosity between the new parish boundary and the related ward and/or division boundary. If so, the Commission will make an order to implement the related alterations. The Commission will not normally look to move ward or division boundaries onto new parish ward boundaries. However, it will consider each proposal on its merits.
180. In addition, when making a recommendation to group or de-group parishes, (see paragraph 108 to 111 for more details) the principal council may make a request to the LGBCE to make a related alteration of district or London borough ward or county division boundaries. For example, if a principal council decided to add an additional parish to a group it may wish to recommend that all of the parishes be included in the same district or London borough ward and/or county division. Recommendations for related alterations should be directly consequential upon changes made as part of a community governance review.
181. It will be for the LGBCE to decide, following the receipt of proposals, if

a related alteration should be made and when it should be implemented. Only the LGBCE can make an order implementing any alterations to the district or London borough ward or county division boundary. No order will be made to implement related alterations until the order changing the boundary of the relevant parish(es) or parish ward(s), or the order grouping or de-grouping parishes, has been made. Rather than make related alterations that would create detached wards or divisions or that would have a disproportionate impact on ward or division electoral equality, the LGBCE may decide to programme an electoral review of the principal council area.

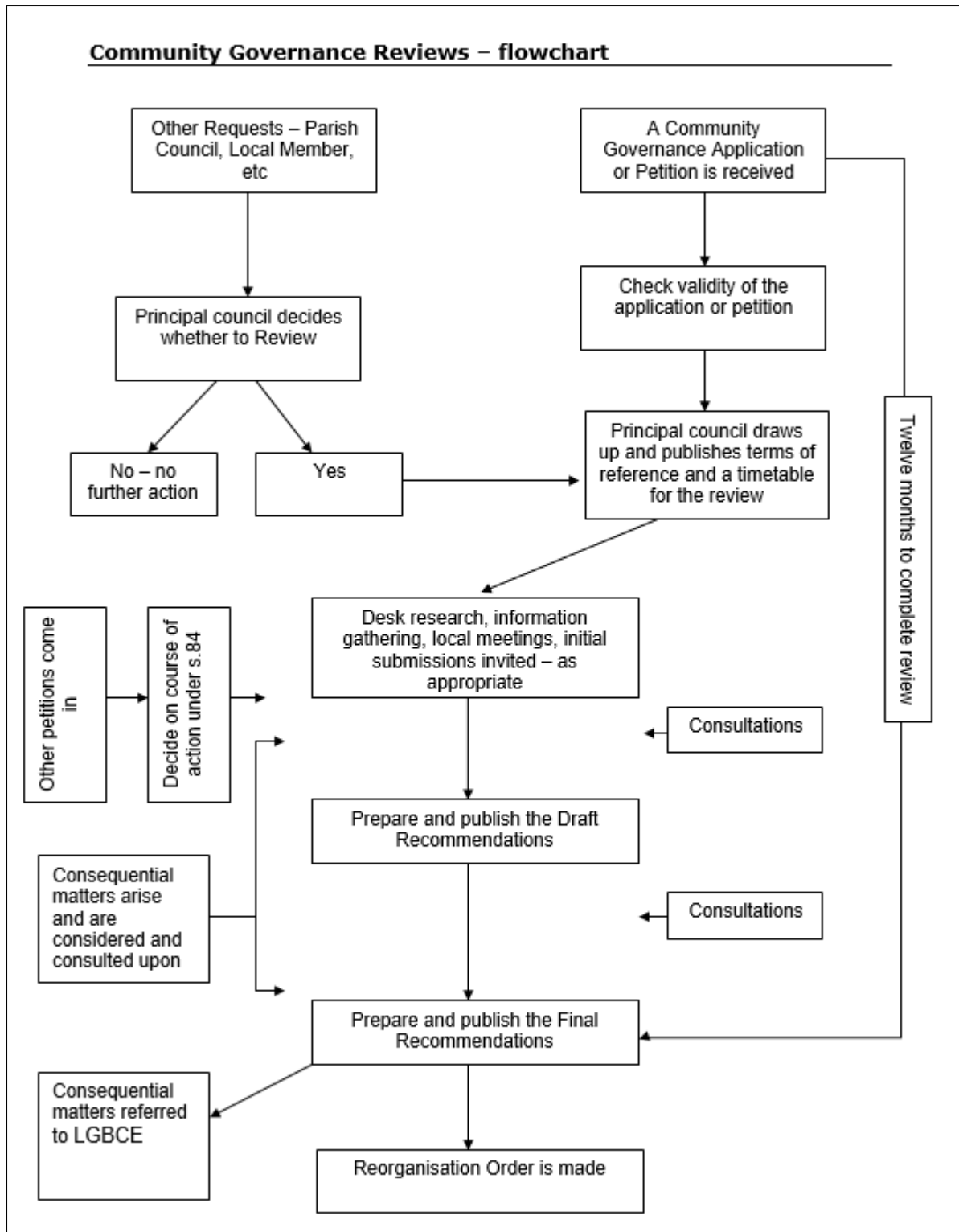
- 182.** If, in liaison with the district or London borough council and/or the county council, the LGBCE decides to make related alterations to ward and/or division boundaries at a different time, it will consider whether there would be any adverse effects for local people in the holding of elections while the boundaries are not coterminous. However, changes to wards and divisions come into force at district or London borough and county ordinary elections in the electoral areas on either side of the electoral boundary change, so a period of non-coterminosity until the scheduled parish, district or London borough and county elections have taken place may be preferable to unscheduled elections. Unscheduled elections will be necessary to bring into force changes between adjacent parishes or wards whose scheduled elections never normally coincide.
- 183.** In two tier areas, district councils are advised to seek the views of the county council in relation to related alterations to division boundaries.
- 184.** A principal council may decide that it does not wish to propose related alterations to ward or division boundaries. Where this results in boundaries no longer being coterminous, principal councils will need to be satisfied that the identities and interests of local communities are still reflected and that effective and convenient local government will be secured. Principal councils will also wish to consider the practical consequences, for example for polling district reviews, of having electors voting in parish council elections with one community but with a different community for district or London borough and/or county elections.
- 185.** Where proposals for related alterations are submitted to the LGBCE, it will expect to receive evidence that the principal council has consulted on them as part of a community governance review and the details of the outcome of that review. Principal councils may wish to undertake this consultation at the same time as they consult on proposals to alter the boundaries of parishes or establish new parishes. They must complete the community governance review,

including making any consequential recommendations to the LGBCE for related alterations, within a period of one year. Sufficient time should be given to the LGBCE to consider the proposals in advance of the election year in which the principal council proposes they be implemented.

186. The principal council will need to take into account the number of registered electors in any district or London borough ward or county division affected when the review starts, and a forecast of the number of electors expected to be in the areas within five years, and provide this information to the LGBCE. This information should be used to establish a total electorate figure for each district or London borough ward and/or county division affected by the recommendations, both for the current electorate and for expected electorate five years after the start of the review. These totals should also be provided to the LGBCE.
187. When submitting proposals to the LGBCE the principal council should illustrate the proposed changes on maps of a suitable scale, using different coloured lines and suitable keys to illustrate the required changes.
188. If the LGBCE decides not to implement the proposed related alterations, then the existing ward and/or division boundaries will remain in force. The LGBCE has no power to modify any recommendations submitted to it; it may only implement or reject the recommendations.
189. In most cases, related alterations to district or London borough ward and/or county division boundaries tend to be fairly minor in nature and simply tie the ward and/or division boundary to the affected parish boundary. However, if an authority has altered several parish and/or parish ward boundaries and proposes several related alterations to district or London borough ward and/or county division boundaries, the cumulative effect of these could affect electoral equality at district or London borough and/or county level. This could be particularly acute if a number of parishes were transferred between district or London borough wards or county divisions to reflect grouped parishes. In such circumstances, the LGBCE will wish to consider conducting an electoral review of the principal council area or an electoral review of a specified area within it. The timing of such reviews would be dependent on the LGBCE's review programme commitments.







This page is intentionally left blank